

Best Quality Perfect Service

HDTMC Co., Ltd. was established to be a specialized world best heavy equipment attachment company in 1991.

Based on the accumulated technology of experts who have worked for research and development in the field of heavy equipment for a long time, the company supplies various kinds of parts for heavy equipment to the world market. And the company continuously works for research and development and produces products for special device application using standard excavators such as demolition, material handling, forestry work etc.

HDTMC Co., Ltd. will not be self-satisfied with our present but all our staff members will do their best to grant the best values to "Human and Technology" and we promise that we will open your dream and future with our best quality and perfect service.



CEO Lee, Ho-Tae

Create the Engineering Solution in Construction Equipment Business

Global competitiveness with sales of 40 billion KRW

HDTMC Co., Ltd. will move forward with the goal of becoming the world's best specialized heavy equipment company.

Customer
management

Creative
management

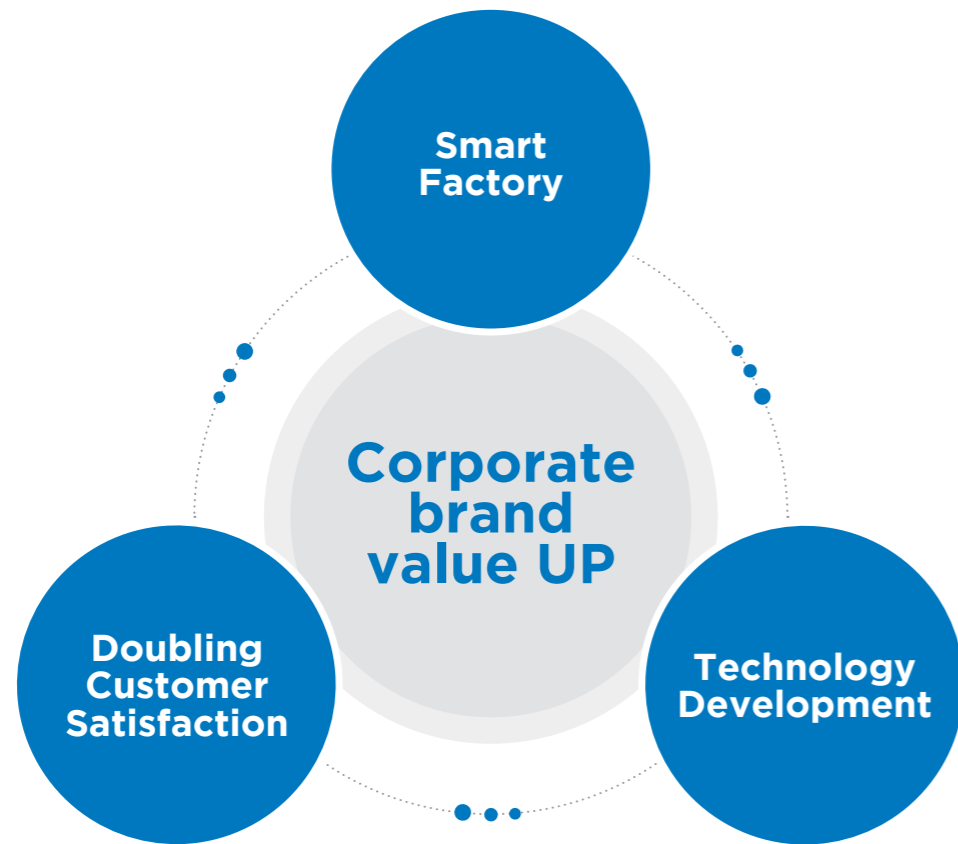
Technology
management

History

2010~NOW

- **2022**
03 Relocated Haman Head Office
- **2021**
09 Selected as Gyeongnam Star Enterprise
- **2020**
12 Certified for Inno-Biz
12 Certified as company specialized in root technology
01 Adopted Welding Robot (10 tons)
- **2019**
12 Exported electric excavators for the first time
07 Smart factory establishment project(PDM)
- **2017**
08 Patent certificate for power transmission device of electric construction machinery
05 Patent certificate for power interrupter of electrically driven construction machinery
03 Approval of the business reorganization plan by the Ministry of Trade, Industry and Energy
- **2016**
12 Venture company confirmation
06 Designated as a global leading company
- **2015**
08 Selected as a specialized material parts company
07 Selected as a local small hidden champion
- **2014**
12 Designated as an excellent company in Gyeongnam where you want to work
03 Established company-affiliated research institute
- **2013**
02 Participated in heavy equipment special device development project
- **2012**
05 Received the Presidential Award for contribution to the development of small and medium-sized enterprises
- **2011**
11 Awarded 20 million dollar export tower
- **2009**
10 Selected as INNO-BIZ
- **2007**
11 Changed company name to HDTMC Co., Ltd.
- **2006**
02 Acquired ISO 9001, ISO14001 certification
- **2005**
02 Introduced office automation system (ERP)
- **2004**
05 Established Hyundai Metal Corporation in 57-3 Palyong-dong, Changwon-si
- **1991**
07 Founded

1991~2009



Smart factory

- Contribution to sales growth by improving productivity through factory automation
- Improvement of manufacturing process, improvement of cost competitiveness
- Replacement of outdated equipment, expansion of robotic processes
- Inventory management, removal of waste factors
- Quality improvement
- Establishment of integrated technical data management system (in progress)

Doubling customer satisfaction

- Strengthening quality inspection of manufactured products
- Promoting customer confidence in our products
- Maintaining safety stock, improving machine up-time
- Improving market quality problems and shortening lead time

Technology development




- Continuous development of next-generation core technology
- Training professionals
- Accumulation of technical data through PLM
- Strengthening intellectual property rights such as patents and overseas certifications

Quality Policy

HDTMC puts Customer satisfaction first.

HDTMC Co., Ltd. has set "Customer Satisfaction" as its quality policy in order to receive customers' trust and love by providing products and services that satisfy customers' expectations and needs. To realize this policy, all employees must establish quality goals for each department and regularly check and review whether the goals are achieved.

Environment Policy

Foundation construction Stage	Establishment Stage	Execution Stage
 <p>Awareness reform : Enhancement of environment and safety awareness</p> <p>Factory environment : Clean and tidy workplace</p> <p>Facility, System : Introduction and application of advances green system</p> <p>Establishment of autonomous environment and safety control system</p>	 <p>Establishment of advanced environment and safety system</p> <p>Realization of green products and services</p> <p>Expansion to partners to the community</p>	 <p>Realization of 3 zero workplace (Pollution-free, accident-free, disease-free)</p> <p>Export of green products and technology</p> <p>Maintaining comparative advantage in green management</p>

Certificate



ISO14001



ISO9001

Robot welding



No	Equipment Name	Size	Q'ty	Usage
01	Welding Robot	RTE476-S, 20,500*6,000*5,200	1	HR Boom & Arm
02	Welding Robot	RTE476-S, 9,260*3,650*4,423	1	20T Boom
03	Welding Robot	QRC350, 8,170*7,000*2,700	2	T/M Support
04	Welding Robot	RTE476-S, 7,200*6,010*3,534	1	T/M Support
05	Welding Robot	HH020, 3,155*3,900*1,800	1	Front Lug



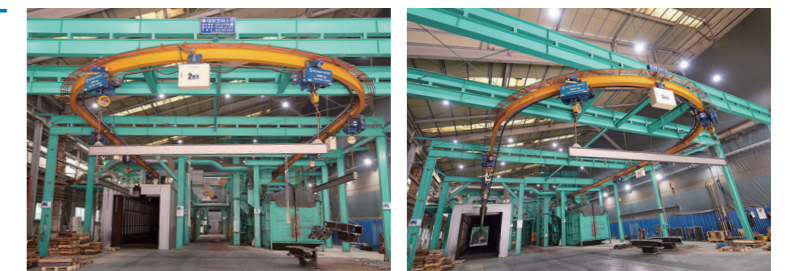
No	Equipment Name	Size	Q'ty	Usage
01	HR Demolition Boom	3,000*14,000	1	EC380EHR, EC480EGR, EC750EHR
02	HR Demolition Arm	2,400*12,000	1	EC380EHR, EC480EGR, EC750EHR
03	Straight Boom	2,700*12,440	1	EC300E, EC380E

Processing line



No	Equipment Name	Size	Q'ty	Usage
01	Duflex-boring #1	2,000x15,500	1	Boom / Arm machining
02	Duflex-boring #2	2,000x8,000	1	
03	MCT #1		2	TRACK Motor Support
04	130CX	1,600x4,000	1	D/Blade, C/Frame machining
05	130T	1,600x3,000	1	D/Blade, for mini EXC
06	Milling #6	1,600	1	Chamfer, Cutting
07	Milling #7	2,000	1	Chamfer, Cutting
08	Milling #8	3,400	1	Chamfer, Cutting
09	Router Machine	3,000x10,000	1	Chamfer, Cutting (for large EXC)

Painting line



No	Equipment Name	Size	Q'ty	Usage
01	Painting shop length	80 Meters	1	All parts can be painted
02	Hoist capacity	6.0 ton	10Set	
03	Conveyor length	160 Meters	1	
04	Primer coat room	1,800*1,800	1	
05	Top coat room	6,000*1,500	2	

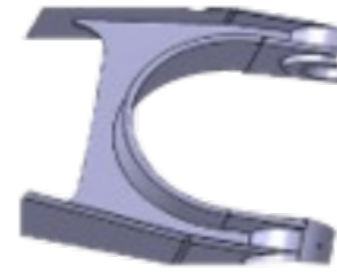
Major Parts Production



Arm



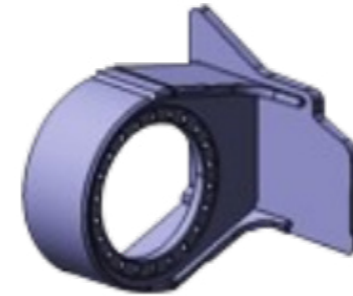
Boom



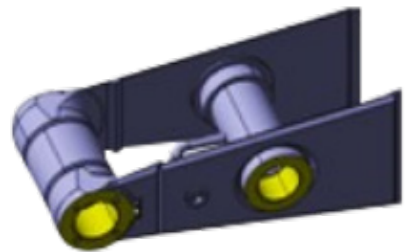
Rear bearing-Boom



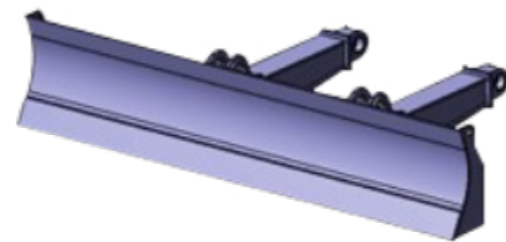
Front Lug-Boom



TM Support



Front bearing-Arm



Dozer Blade



Outrigger

Major Parts Production line



Boom&Arm



TM support & bearing



D/B&Outrigger

Ultra High Reach Demolition



This is a special demolition equipment for buildings with long axis to dismantle old high-rise buildings in the city safely and perfectly.

38~75ton class equipment



Demolition set



Digging set



Extension set



Forestry Machine Modification



This equipment is developed for forestry, such as logging, loading, transport and road expansion in forest areas, and is divided into Harvester, Log loader, Road builder, Shovel logging etc. based on use.

Harvester



This is a representative logging equipment for forest work, which was developed to chop wood in consistent length and cut off branches.

Harvester with jib bucket

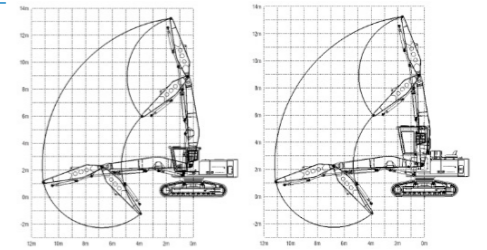


Log loader



This forestry equipment was developed to transport or load the hardwood logged in forestry operation.

Radius of work
30ton class equipment



Road builder



This forestry equipment is developed to make strip roads and forestry roads used to transport forest products in forest areas.

Shovel logging



This equipment moves hardwood logged in workspace to the road where transport vehicle can enter.

Winch assist

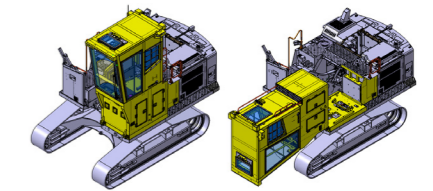


The application of a towing device for the safety of the slope logging equipment and Digging can be performed in parallel for improved utilization.

Rear Entry Cab



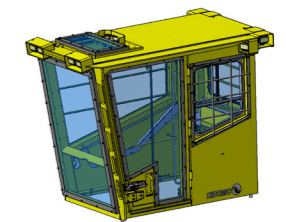
Cab installed in forestry equipment, mostly used for log loading in forest, secures operator's visibility and enables back entry to provide convenience and safety to operator, as well as lowering overall height by tilting the cab to the front during transport.



Rops Cab



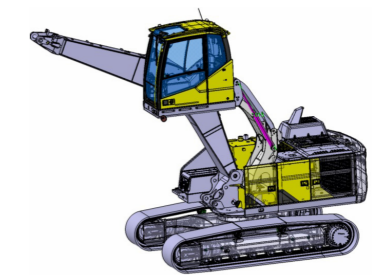
This cab is designed to protect the operator from any unexpected accidents that may occur during operation, and is acknowledged for international standard ROPS(Roll Over Protective Structures).



Elevating Cab



This cab elevating system adjusts cabin height according to operation condition to secure the sight needed in various operations.



Electric Excavator



This excavator uses electricity as energy in limited workspace, which is highly economical compared to diesel and causes no air pollution.

Class & System	30ton class Dual power	38ton class Dual power	48ton class Dual power	75ton class Dual power	Remark
Main Motor	IE3 3Phase, 380V, 440V, 160KW 4Pole, 60Hz	IE3 3Phase 380V, 440V, 200KW-220KW 4Pole, 60Hz	IE3 3Phase 380V, 440V 250KW-280KW 4Pole, 60Hz	IE1 3Phase 380V, 440V, 385kw 4Pole, 60Hz	IE1 (Standard efficiency) > 375kW Motor IE3 (Premium efficiency) < 375kW Motor
A/C Motor	3Phase 380V, 440V, 7.5KW 4Pole, 60Hz	3Phase 380V, 440V, 7.5KW 4Pole, 60Hz	3Phase 380V, 440V, 7.5KW 4Pole, 60Hz	3Phase 380V, 440V, 7.5KW 4Pole, 60Hz	A/C compressor Motor
Start Method	Reactor Type				
Cabin Heating	Electric Heater				
Safety Device	Motor Overload protection				
	Power line Shortage Protection				
	Maximum reach close alarm				
	Maximum reach power-cut				

Ground pole type Electric excavator



This is an electric excavator mainly used outdoors, and a pole that can supply power is installed outside, making it possible to adjust the working radius according to the length of the cable coming from the pole.

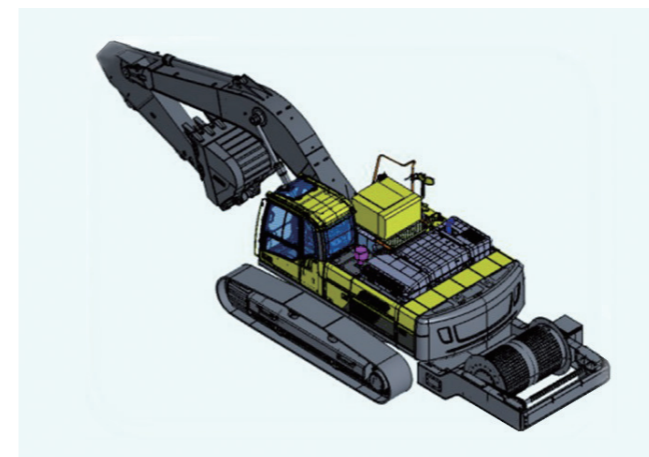


Roof rail type Electric excavator



This is an electric excavator mainly used indoors, and it enables the movement of equipment along the rail for power supply installed on the ceiling, and the working range of the equipment is adjusted according to the length of the rail.

Cable reel type Electric excavator



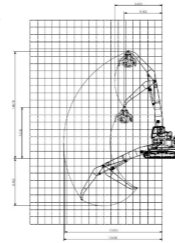
This is an electric excavator which is mainly used tunneling and underground work. The maximum working range is 100M.

Material Handler



Long boom and goose-neck arm are installed on standard excavator to handle metal wastes and scraps, so handler, scrap loader, etc. can be attached at the end of the arm.

Radius of work

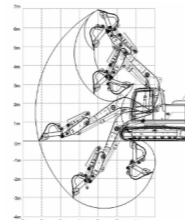


Short boom & Short arm for Basement machine



This equipment is developed to enable work in spaces with limited height, such as tunnels or underground excavation as it is equipped with a short boom and short arm.

Radius of work

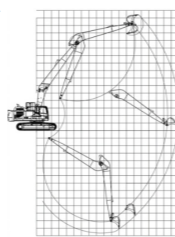


Long boom & Long arm



Long reach boom and arm is a special purpose attachment for a variety of application such as clearing silt in river, digging in the sand, trimming of slope of the land or dam, digging deep gully, dig deep in the sea for port.

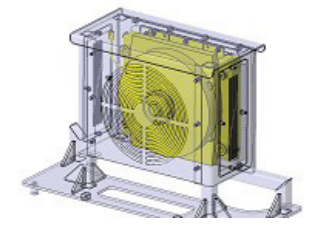
Radius of work



Auxiliary oil cooler kit



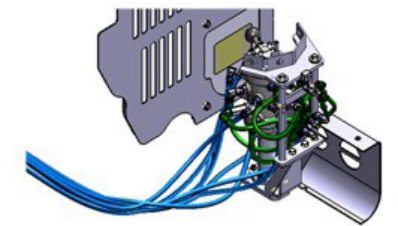
An auxiliary cooling device designed to improve the performance of the hydraulic system from heat caused by excessive work in forestry and underground drilling equipment.



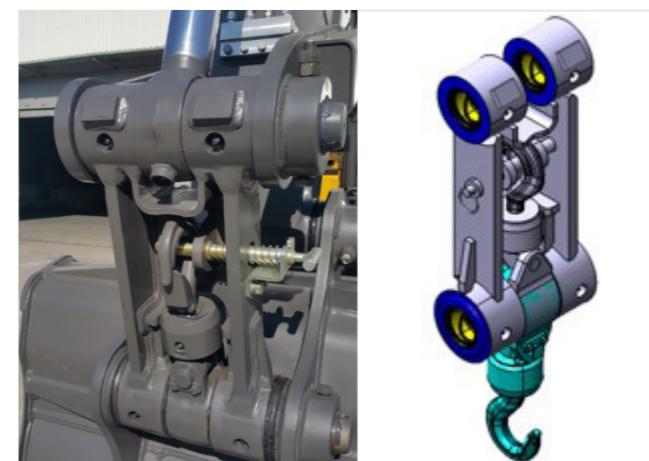
Pattern change



A device designed to easily change the operation pattern of the joystick's Volvo, Komatsu, Hitachi, and SA using a lever.



Lifting hook



A device that can safely transport and place objects with a hook attached to the C-rod.

SPECIAL PURPOSE EXCAVATOR EXCAVATOR SPECIAL PARTS

